

## PATIENT ENGAGEMENT SOLUTIONS

# INTERACTIVE PATIENT EDUCATION

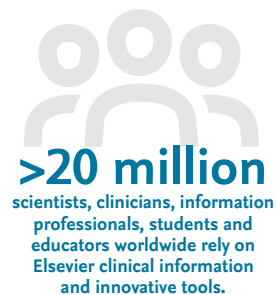
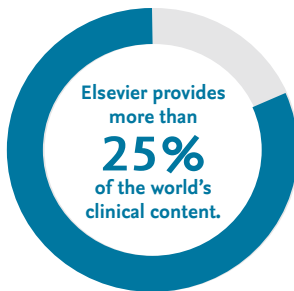
**Educate your patients by sharing valuable health information customized to suit each individual's language, literacy level and learning preferences.**

Elsevier Interactive Patient Education enables you to confidently share peer-reviewed, evidence-based healthcare information that is consistent with current medical practices and guidelines. This solution seamlessly integrates with your EHR, portal or website so the information is documented in the health record and directly accessible to patients any time, anywhere.

## WHO IS ELSEVIER?

Elsevier is a leading provider of medical and scientific information, with more than 20,000 products for education, professional science, and healthcare communities worldwide.

Operating across the care continuum, Elsevier Patient Engagement is a set of key solutions that addresses the needs of care providers and patients. We help providers empower clinicians and patients, improve administrative excellence and care, while promoting a culture of quality throughout the enterprise.



## WHAT IS INTERACTIVE PATIENT EDUCATION?

**Elsevier's comprehensive text and video patient education content spans the continuum of care.**

This Elsevier solution enables patients to search for, and providers to share, information and education on thousands of health topics. Our interactive videos, educational handouts and medication management tools help care teams build meaningful connections with their patients, fueling better questions and conversations. A powerful way to optimize your IT investment, Elsevier's Interactive Patient Education solution helps support your organization's performance improvement goals for:

- Increased patient engagement
- Enhanced patient safety and outcomes
- Regulatory compliance and quality scores
- Increased clinical efficiencies and workflow enhancements
- Reduced hospital readmission rates
- Reduced medical costs and risk
- Consistency in care
- Patient satisfaction

## HOW IT WORKS.

Using video-based multimedia education with our unique content management delivery system, providers can make a meaningful impact on patient health today – and for years to come.

With Elsevier Interactive Patient Education, you can:

- Create personalized play lists of short, engaging videos for patients
- Seamlessly integrate Patient Education with Elsevier's Care Planning solution
- Meet the patient-specific education core objective of Stage 2 Meaningful Use

It also provides access to:

### TEXT

- Titles covering 4000 conditions/diseases, 700 health topics, 2900 drugs and 225 lab tests.
- Information in 13 languages.
- Easy-to-read content written at or below the 4th-grade reading level and standard content written at the 5th- to 8th-grade reading level.

### VIDEO

- More than 1500 titles on more than 900 topics across specialties.
- More than 500 videos on FDA-approved medications.
- 60- to 90-second medication and administration videos.



## CONTENT BY CARE SETTINGS.



### HOSPITALS / INPATIENT

Help patients learn more about their specific medical conditions, recommended treatment options and post-operative regimens. Prescribe content, track patient progress print patient education instructions and document the information shared throughout the encounter – all within the clinical workflow.



### CLINICS / AMBULATORY

Help patients become more informed about their diagnoses, associated treatment options and instructions for self-care. Videos can be assigned and viewed on any internet-connected device, anywhere in the facility.



### HOME / HOME CARE SETTING

Extend the education and engagement outside of the hospital or clinic by sending assigned education to a patient portal for viewing at home or on the go.

**Wherever, whenever Interactive Patient Engagement from Elsevier keeps you in contact with patients and establishes your organization as a valuable health information resource.**

Discover how Elsevier Patient Engagement solutions can help engage, educate, and empower your patients. Visit [ElsevierPatientEngagement.com](http://ElsevierPatientEngagement.com), contact your Elsevier Sales Representative, or call 866-416-6697 today.